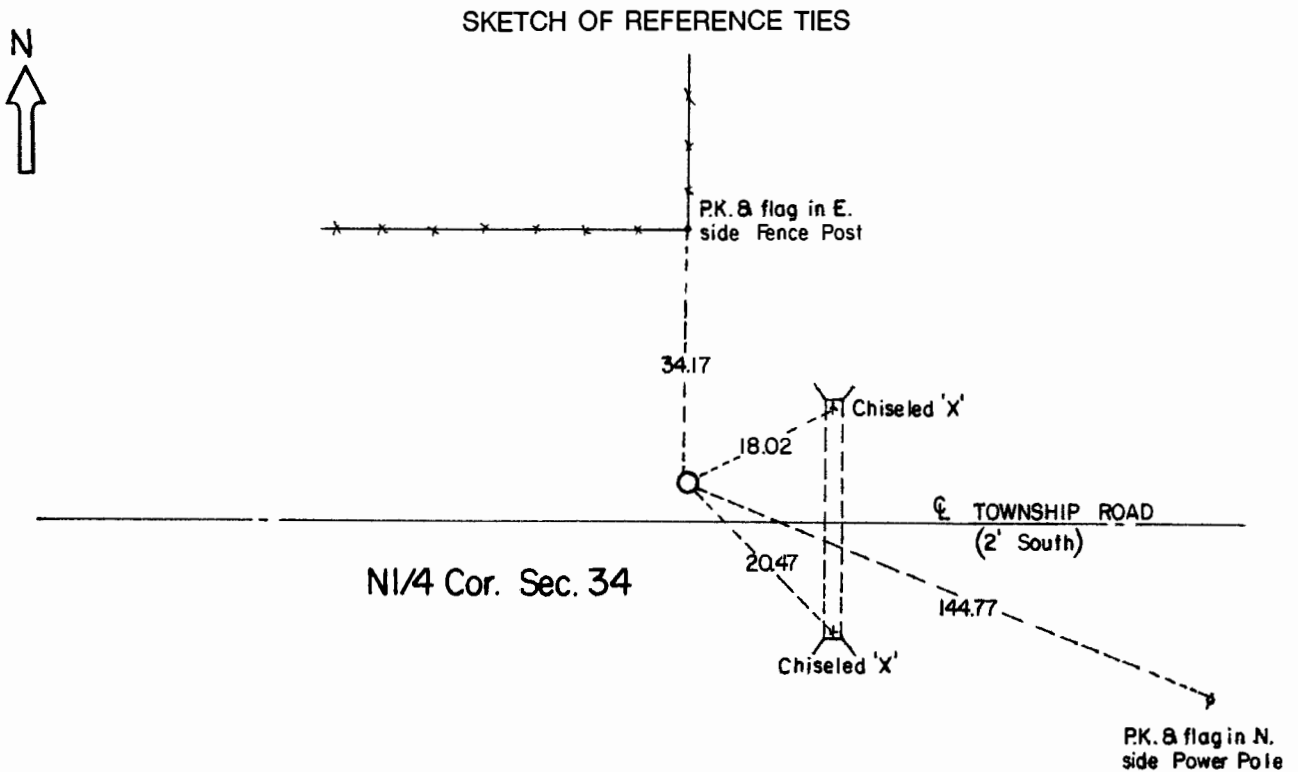


# CERTIFICATE OF LOCATION OF GOVERNMENT CORNER

**North Quarter** Corner of Section **34** , Township **108** , Range **41** 5th P.M.  
STATE OF MINNESOTA, County of Murray.

**Statement:** July 13, 1989 - Found a cast iron wedged shaped machinery part measuring 24 inches x 6 inches x 1/2 inch and an 18 inch bolt with a small stone by it. Placed a Minnesota Department of Cast Iron Monument at the road surface.



Statement of evidence relative to this corner location is on the back of page.

I hereby certify that this document and the data contained herein was prepared by me or under my direct supervision and that I am a duly Registered Land Surveyor under the laws of the State of Minnesota.

*Duane A. Bonnema*      *Nov 6, 1989*  
Duane A. Bonnema      Date

Minnesota Registration No. 14895

OFFICE OF THE COUNTY RECORDER  
COUNTY OF MURRAY **NOV 15 1989**

I hereby certify that this document was filed in the County Recorder's office at \_\_\_\_ M. on the \_\_\_\_ day of \_\_\_\_\_ A.D., 19\_\_

County Recorder *[Signature]*

By \_\_\_\_\_, Deputy

DOCUMENT NO. \_\_\_\_\_

North Quarter Cor. Sec. 34 T108N-R41W

*Statement:*

- August 1861*      *Original Government Land Office Surveyor L. G. M. Fletcher records in his field notes, "built mound with trench pits, charred stake, per instructions."*
- July 13, 1989*      *Duane A. Bonnema, LS Reg. No. 14895, found a Cast Iron Plate 24 inches x 6 inches x 1/2 inch 3 feet below the road surface. Found 18 inch long bolt below the Cast Iron Plate with a small field stone by it. Placed a Minnesota Department of Transportation Cast Iron Monument 5 inches below the road surface and above the Cast Iron Plate and Bolt. An older resident who lives 200 feet South of this corner came out and informed us that he had a survey done which necessitated the use of this Section Corner. He knew exactly where it was located. These monuments appear to be the best available evidence of the corner location.*